

2009 Lecture Series!

Aaron Barr

The 2009 Lecture series will kick off Jan 8th. Once again we'll be in SPU's Otto Miller Hall room #127 and the dates are Jan. 8, Feb. 12, Mar.12 and Apr. 9! Doors will open at 6:30pm with talks starting at 7pm.

See page 7 for the list of speakers and descriptions.

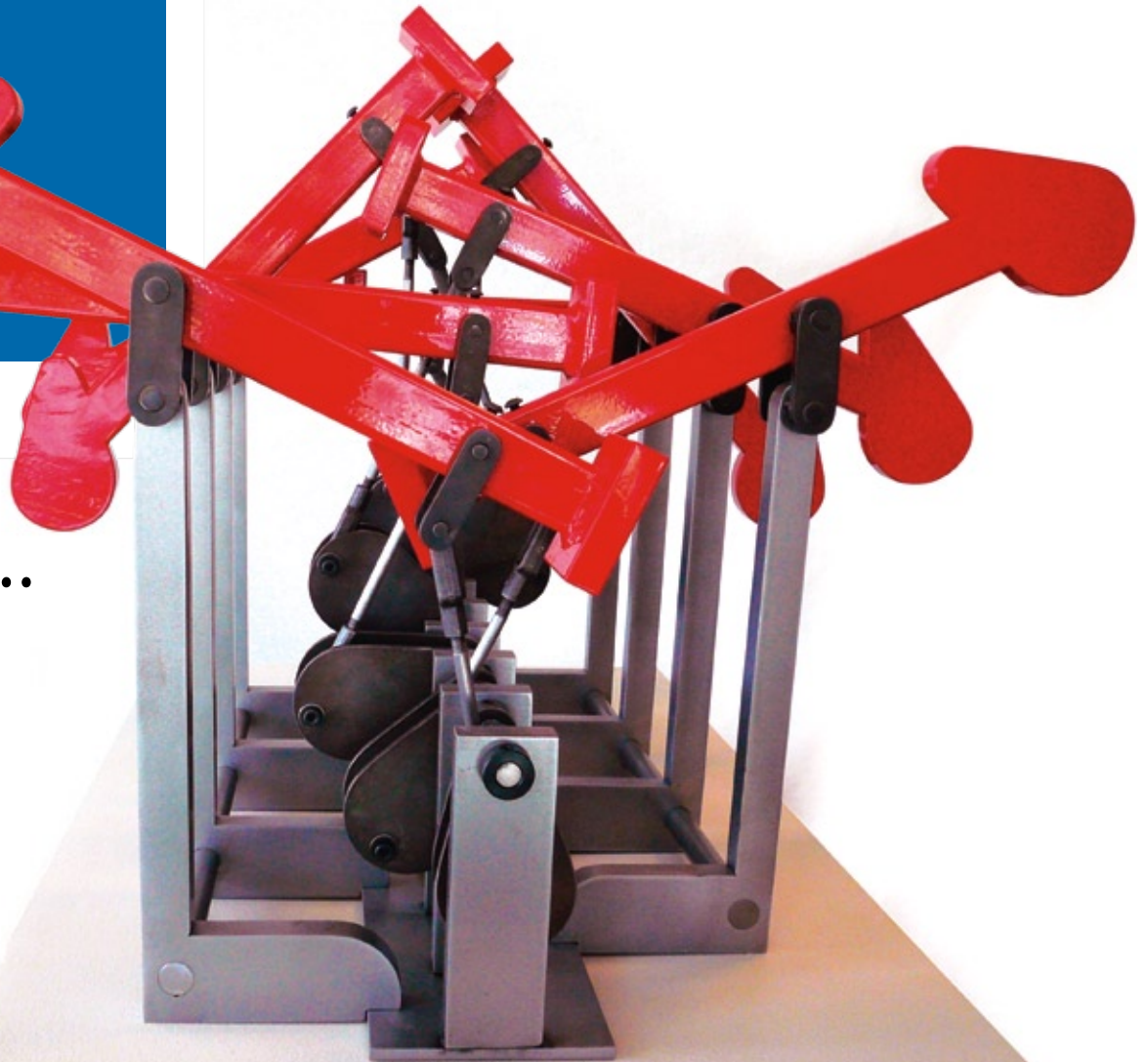
In This Issue...

Symposium
Review

Page 3

Thumbnail
Sketches

Page 4



Chris McMullen, *Pump 1*

SMG Scholarships!

Deadlines are year-round, but the following scholarships have an upcoming deadline of March 1, 2009:

- The Kris Williams Continued Education Scholarship
- The Sharon Boardway Matriculated Student Grant
- The Ramona Solberg Travel Grant

Descriptions and application material can be found on our website: www.seattlemetalsguild.org

Questions, comments and suggestions can be emailed to vicepresident@seattlemetalsguild.org

Thank You.

2008 Annual Financial Report on the Seattle Metals Guild

Submitted January 2009, by Camille Keyes, treasurer, Seattle Metals Guild.

Welcome to 2009! It promises to be an interesting year for the Guild as we address the many services delivered to our members and the greater Northwest community. Much of what we do, as in Passing the Torch and Lecture Series, is offered free while income is generated through dues, workshops, Symposium and donations.

In a tough economy, the Guild is confident it can meet the challenge of maintaining a healthy bottom line to fund existing and new scholarships and public services. Doing so will involve greater care in terms of spending and more attention to marketing our income generating events. Additionally, we are planning to ramp up our program for donation solicitation.

As a non-profit corporation, we've been accepting donations under the auspices of Allied Arts. The Treasurer's goal for 2009 is to establish Seattle Metals Guild's own federal tax-exempt status so that we may assertively seek public contributions and process gifts through SMG's own system.

SMG Events

Date /Event	Page
Jan. 8 - April 9: SMG Lecture Series.	1
Jan 31 - May 25: 9th NW Biennial, Tacoma Art Museum	
Feb 27: Donation Deadline for Pratt Auction	
April 14 - May 8: Passing the Torch	

Contents

SMG Lecture Series	1
Board News:	
SMG Scholarships.....	2
SMG Financial Report.....	2
Member News:	
Scholarship Report	3
Catherine Grisez Exhibition	3
Joan Tenenbaum Exhibition.....	3
Reviews:	
SMG Symposium	4
Thumbnail Sketches	5
Market Place.....	6
Events:	
SMG Lecture Series (continued)	7

Your Board of Directors is committed to transparency relative to SMG's financial information. Please feel free to email your questions to treasurer@seattlemetalsguild.org.

The following shows a \$2,635 decrease in cash assets between 2007 and 2008 year-ends. The deficiency is largely due to our first-ever scholarship awards and lower than expected attendance at Symposium workshops. The scholarship accounts, established early 2008 from general funds, are reflected in these totals.

SMG Assets as of...

12/31/2007	\$28,980
12/31/2008	\$26,345

Scholarship Accounts:

George McLean Specific Project Grant.	\$1,000
Kris Williams Continued Education.	\$138
Ramona Solberg Travel Grant.....	\$500
Ruth Pennington Teaching Grant.....	\$1,000
Sharon Boardway Matriculated Student	\$1,500

Our Scholarships Make a Difference. Pass it On!



Hi! My name is Jane Krohn and I was awarded the Kris Williams scholarship from the Seattle Metals Guild last summer. Wow, what a gift and an honor. I am very grateful for the opportunity.

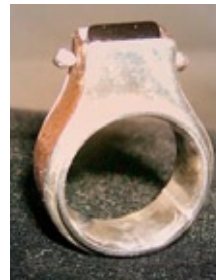
I chose to take the Jewelry/Metals class at North Seattle Community College with Lynne Hull. My original goal was to improve my bezels and stone setting but with the opportunity for a full class, I decided the diversity would be more beneficial. Having just completed the class, my craftsmanship in all areas of my jewelry making has increased dramatically and as a teacher myself, watching someone with so much experience do their job was a bonus gift to me that can be immediately transferred to my own classroom.

As a first time high school jewelry teacher last year, I was overwhelmed by the intricacies of the job: classroom set-up, inventory and supplies, safety training, equipment maintenance and upkeep, project creation, instruction, metal science, design and production, technical math, craftsmanship, and the list goes on. One of the gifts of this summer class with Lynne was that in this well-run, working classroom lab, all of these areas were addressed. I felt good, upon reflection, about some of the areas in my teaching of jewelry/metals, and at the same time,

I would love a “do-over” in other areas. It is a finely honed skill to teach large numbers of students in a lab setting. I appreciated this opportunity to view the classroom from a student perspective.

On my personal end, the fine points of my summer experience could be considered the “tricks of the trade”. Some examples of this are: ways to get a great seam for a band ring or bezel, new ways to finish, polish, and texture metal, making molds in new ways, problem solving for tube setting, chasing and repousse (thank you Candace), working with a variety of flames, repair work for delicate items, suggestions for multiple solders in one piece, shop set up and so much more!

My new favorite, and one I plan to explore in more depth, is hollow-ware. I created multiple pieces using this technique and I am so inspired by the possibilities! I have included a picture of my final piece. This is a copper and sterling hollow-ware ring with a black onyx center stone attached by a sterling wire. This gives the center piece some movement and adds another dimension to the piece.



Thank you again for the gift of support. I look forward to more involvement with the Seattle Metals Guild and the opportunity to “pay it forward”.

Sincerely,
Jane Krohn



Catherine Grisez,
Transmutation a, b, c

The Work of Catherine Grisez

Catherine’s work will be exhibited at the Traver Gallery in Tacoma, Washington. If you are

planning to head that way be sure to include a stop to see this wonderful exhibition. It is up now until February 8th. And for those of you who aren’t able to visit, the website should be updated soon to show her current work. Catherine is one of the young “stars” in the metal world and we hope you get a chance to see her work.

http://www.travergallery.com/current_exhibitions.aspx
www.catherinegrisez.com



Joan Tenenbaum,
Four Seasons Mandala Pendant

...And the Work of Joan Tenenbaum

Joan Tenenbaum participated in the Exhibit, “Transformation & Change on the Northwest Coast” at Stonington Gallery in Seattle, WA in the month of December 2008.

Review of SMG Symposium

Nanz Aalund

I have been attending the Pacific Northwest Metals Symposium every year for the last eight years. Each year the artist's presentations seem to be stronger, while the program's quality has become more consistently accessible and engaging. After David Freda and Harlan Butt spoke about their incredibly awe inspiring enamels in 2007, I thought the Symposium committee would be hard pressed to top themselves. But the Symposium which took place on Oct. 18th, 2008 at the Museum of History and Industry had one of the most exciting and wonderful collection of speakers I have ever had the good fortune to be in the audience for.

The Symposium for me has always been about making connections, with past teachers, colleagues, former students, friends, and fellow members of this tribe known as metalsmiths. This year I was happy to bring a new friend, Kathleen Yorston, owner of Pouncing Rain - Jewelry Metals Center, to her first Symposium. The networking with friends before and between speakers is fun and rewarding on so many levels, that I always come away energized.

The speakers program started with Gary Griffin who's work, to be honest, I was unfamiliar with. To my enlightenment the charming and dapper gentleman who spoke had been the head of the Metals program at Cranbrook Academy of Art in Michigan for the last two decades, retiring in 2006. His presentation focused on the work he produce as an artist in residence at the Kohler Co. Art and Industry program, and a series of gates he produced for private clients using CAD/CAM processes. It was fascinating to see.

Harriete Estel Berman gave an incredible presentation called "Crafting Identity," which aptly illustrated how she has incorporated her identity as an artist into her work and into her signature on her work. During the break, Symposium attendees got the extra bonus of Harriete showing us two videos she produced that covered the making of her "Consuming Conversation - 200 Teacups" collection.

Susie Ganch was next on the agenda. While I have never found the images of her work very compelling,



Suzie Ganch, *Untitled*

the art-speak written about her work has compounded the problem by leaving me baffled. Hearing the artist herself speak about her work, suddenly made her work approachable and interesting in ways I had not anticipated. I thought to myself that this was truly the benefit the Symposium offers SMG members; to hear the artist's own words about their work, their process, their ideas.

Kristin Mitsu Shiga spoke next and related the making of objects to important events that occurred in her life. Kristin's humor and humanity were artfully presented as the audience was invited along on her very personal journey through jewelry making and a life of Art. This remarkable young woman has not only established herself as an original voice in our field but has also brought her helpful organizational skills to the administration of SNAG and is now at the Oregon College of Arts and Crafts as the Director of the Extension Program.

The final speaker was a personal favorite of mine, Fred Fenster. The Professor Emeritus from University of Wisconsin at Madison presented a rambling conversation on the making of hollowware in pewter. His presentation covered the work of fellow metalsmiths working in pewter over the last 20 years. The historical importance of his personal anecdotes on metalsmithing may never be documented in writing making his lecture at the Symposium a true lesson in the importance of oral history. His talk made me really want to stay and take his workshop to learn more about pewter.

Thumbnail

Sketches

metals events & information

Breaking the Mold...

...is an **Exhibition at Pratt Gallery at Tashiro Kaplan Studios on January 8 - 30, 2009**. This exhibit features Pratt instructors who work in kiln-cast glass and cast metal sculpture and includes work by artists Scott Ball, Susan Balshor, Cathy Chase, Jeanne Ferraro, Carol Milne, Alex Montgomery and Ed Trobec. This exhibition takes place at the Pratt Gallery at Tashiro Kaplan Studios, 306 South Washington, Seattle.

Opening: First Thursday, January 8, 6-8pm

The Women's Shelter Jewelry Project...

...received some great press! Check it out at this website: http://seattletimes.nwsourc.com/html/living/2008474080_jewelry06.html

The 2009 winter schedule...

...for **Danaca Design Metal Crafting Center** is done!! It is absolutely the most packed schedule ever, surely there will be something on it for you! If you've always wanted to take a class, now is the time. If you've been meaning to get back into the studio, now is the time. If you are thinking about stepping it up a notch to a more profession level, now is definitely the time. Make it your New Year's resolution! www.danacadesign.com.

Lark Books wants YOU...

...to design a pair of earrings that can be made...start to finish...in 30 minutes flat. Winning jewelers will be paid to create their designs. Winning designs will be published in a new Lark jewelry book, "30-Minute Earrings." We won't be teaching fundamental jewelry making techniques in this book. Designers can assume that their readers are already proficient (and quick!) at skills such as sawing, soldering, and finishing.

Proposals due: January 26, 2009 (and not a second later!) Visit Lark Books at <http://www.larkbooks.com/submissions/artist-submissions> for details and design forms.

Did you know...

...the Seattle Metals Guild has a library that includes books, videos and show catalogues? Well, we do and it's available for members to check material out. The library is located at Jewelry Resource Supply in Fremont. While many wonderful additions have been made, please check out the Mar/Apr 2006 newsletter on the SMG website for a list of much that is available. If you would like to check the availability of items, please contact librarian@seattlemetalsguild.org.

Artist Trust's GAP (Grants for Artist Projects)

Application Deadline: February 20, 2009. Individual artists who reside in Washington State are encouraged to apply to the 2009 GAP (Grants for Artist Projects) Program. Artist Trust's GAP Program provides support for individual artist projects by awarding up to \$1,500 for projects including (but not limited to) the development, completion or presentation of new work. Last year 975 artists applied to the GAP Program and 80 artists were funded from around the State.

The GAP Program is open to artists working in all creative disciplines including visual, performing, literary, media, emerging and cross-disciplinary arts. Applicants must be residents of Washington State but cannot be a graduate or undergraduate student enrolled in a degree program.

A complete guide to the Grants for Artists Projects can be found at www.artisttrust.org/grants/GAP, and artists are encouraged to attend a "How to Build A Strong Grant Application Workshop" offered free for all artists. Visit www.artisttrust.org/events/artist_workshops/grants for more information.

To network more information and future entries for this column, please contact newsletter@seattlemetalsguild.org

Market Place

Note: Ads will run for one issue. If you wish to resubmit you must do so by each newsletter deadline.

V&O Lapidary

Handcrafted Designer Cabochons
vo_lapidary@msn.com
North Seattle

V & O Lapidary... Crafters of fine cabochons... See us for the one-of-a-kind stone you can never find. We can custom cut for that special project lurking in your sketch book. Contact us at (206)364-9278 or vo_lapidary@msn.com. Be sure to check our offerings at Jewelry Resource & Supply in Fremont.

The Astragal Press

www.astragalpress.com

Our company, the Astragal Press, is an independent publishing company based in Mendham, NJ. We publish unique books devoted to the subjects of metalworking trades (such as copper and blacksmithing), woodworking antique tools and early sciences.

Many of our books are historically based and are an excellent resource for students, collectors, historians, curators, academics or just plain lovers of history. Our books have been carried by such institutions as *The Colonial Williamsburg Foundation*, *Mystic Seaport*, *The National Ornamental Metal Museum*, *The United States Post Office Store*, *Winterthur Museum*, among others.

Resources

Danaca Design

Metal Crafting Center and Gallery
5619 University Way NE, Seattle 98105
206/524-0916

Metal Crafting Center is an 8-bench jewelry fabrication studio on the quiet end of 'the Ave'. We offer a quarterly schedule of unique workshops, open studio hours and house a diverse and fine store front gallery. Find out all there is to know about the shop on line at www.danacadesign.com.

The Alchemist's Casting Shop

Seattle, WA 98126 (206)933-9255
the-chemist@comcast.net

High quality production casting services in platinum, gold, silver, bronze. RTV, vulcanized silicone and rubber molds. Metal fabrication, wax carving to specifications. Visa/MC accepted. Call for a free consultation.

Jewelry Resource & Supply

Greenwood and Leary Way
3601 Greenwood Ave. N
Seattle, WA 98103 • (206) 632-7005

Seattle Jewelry Resource & Supply, your one stop shop for all your jewelry and metalworking needs. Rent our studio space and put your new skills to work! With a full supply store we're sure to have whatever tools you need to create your art.



Fourth & Pike Building
1424 Fourth Avenue – Suite 204
Seattle, WA 98101
(206) 682-7020

Seattle Findings & Supply center is your premier source for jewelry findings, tools, equipment, supplies and metals. We are located in the heart of Downtown Seattle at the center of the jewelry district. Stop by our showroom or give us a call and we can ship orders directly to you. Also, be sure to visit us online at www.seattlefindings.com.

Schools

Bellevue Community College

300 Landerholm Circle SE
Bellevue 98007-6484
(206)641-2263

Bellevue Community college offers classes and workshops in Jewelry and Metalsmithing at affordable prices. View our website at <http://www.bcc.ctc.edu>, click on Continuing Education, then ARTS.

North Seattle Community College

9600 College Way N., Seattle
(206)527-3600
<http://nscucc.sccd.ctc.edu>

The Seattle Community College system offers jewelry design and light metal fabrication at its North campus. The facilities are some of the best in the country with torches at every bench, and all the necessary hand tools needed to construct fine jewelry. The studio has designated hot and cold working areas and a complete casting setup for gravity and centrifugal processes. The sheet metal equipment includes a metal shear, box brake, metal lathe, and milling machine. There is also basic lapidary equipment available for stone cutting and polishing. For more information, contact Lynne Hull at (206)526-0062 or the Humanities department at (206)527-3709.

Oregon College of Art and Craft

8245 SW Barnes Rd., Portland Or 97225
(503)297-5544 www.ocac.edu

Pratt Fine Arts Center

1902 South Main Street, Seattle 98144
(206)328-2200

Pratt Fine Arts Center, Seattle's premier studio for the visual arts, provides unparalleled opportunities to artists in its world-class studios for glass, sculpture, jewelry, metalsmithing, painting, drawing and printmaking. Courses and workshops are available for beginning as well as advanced students. Open lab times are available for independent artists during the week and on many weekends. Please call for a full schedule and a registration packet.

South Seattle Community College

6000 16th Avenue SW, Seattle 98106
(206)764-5352

South Seattle Community College remains the best-kept secret in the greater Seattle area. Craftspersons of every discipline are delighted to discover that the finest educational welding fabrication facility (possibly in the universe) welcomes both vocational and recreational students. We got the stuff! Calling ahead is best, but you're OK to stop by anytime. Sessions Mon-Fri, 7am-12pm, and Mon/Wed or Tue/Thu evenings. Call John Todd, (206)764-5352, (206)764-5359(w), or (206)283-5069(h). E-mail to jtodd@sccd.ctc.edu

Opportunities

www.bdina.com

We currently have available opportunities to showcase at our online jewelry gallery www.bdina.com! Interested artists can contact Dina Baloyan at info@bdina.com.

B.Dina jewelry features limited-edition and one-of-a-kind handcrafted jewelry created by independent artists. The selection is purposely diverse and fresh exhibiting work by up-and-coming artists as well as seasoned contemporary art jewelers.

MEMBERSHIP FORM

Today's Date _____ New Member Renewing Member Check if contact info has changed

Name _____ Organization (If applicable) _____

Address _____

City _____ State _____ Zip _____ Country _____

Daytime Phone _____ Evening Phone _____

Email _____ Fax _____

Check if you do NOT want your address or phone published in the SMG directory

Check if you do NOT want your SMG newsletter in electronic form only
(Help the guild save money and resources by viewing your newsletter online. You will receive email notification when each newsletter is available. Check the box only if you want to receive a paper copy of the newsletter in addition to the electronic version.)

Enclosed is: \$45 Individual membership (1/1/2009 – 12/31/2009) \$20 Student w/copy of student ID
 \$60 Membership for any number of adults at same address (1/1/2009 – 12/31/2009)

*Membership runs for the calendar year, **January 1 – December 31, 2009**. Memberships **paid on or before** October 31, 2009 **will end** December 31, 2009. Memberships **paid** November 1, 2009 – December 31, 2009 **will extend** through December 31, 2010.*

I can help with: Newsletter Mailings Bead Necklace Exhibits Workshops and Events
 Symposium Educational Outreach Misc. – Call me for specific tasks as needed

Other skills I can offer to SMG: _____

Send checks payable to Seattle Metals Guild, 1425 Broadway #154, Seattle, WA 98122-3854
Please allow up to four weeks for processing of your membership. If you have not received confirmation within four weeks, please contact membership@seattlemetalsguild.org.

Events

Jan. 8 - Chris McMullen

Seattle sculptor Chris McMullen presents – Kinetic Absurdities: Removing purpose to expose the beauty in simple movement

Feb. 12 - Corky Storer

Forging Deeper into the Plasticity of Modern Steel
 Artist blacksmith Corky Storer introduces us to his world of steel

Mar. 12 - Lauren Grossman

Whithersoever: an Artist's Take on Western Culture.
 Lauren Grossman shows her work combining cast, found, and fabricated metals with a host of other media – from porcelain to propane to insect-filled fiberglass.

Apr. 9 - Samia Shalabi

Journeys to India: Goldsmithing;
 A tradition, culture, and art.

Samia Shalabi spends 2-3 months each year in Southern India, studying, working and learning the Indian art of goldsmithing from 2 small independent master goldsmiths and artisans. She will share some of her extraordinary experiences and bring along some of what they have made.



Lauren Grossman, *Valley of Decision*

2008-2009 SMG Board of Directors

All addresses are suffixed with "@seattlemetalsguild.org"

President	John Caster	president@	
Vice President	ET Kessler	vicepresident@	
Secretary	Jessie Wylie	secretary@	
Treasurer	Camille Keyes	206-856-5918	treasurer@
General Board	Aaron Barr	board2@	
General Board	Dana Cassara	board3@	
General Board	Kiraya Kestin	board6@	
General Board	Lotta Gustafsson	board8@	

SMG Services

Newsletter Editor	Cynthia Wood	newsletter@
Library	Jonathan Tindall	librarian@
Symposium Coordinator	Candace Beardslee	symposium@
Workshop Coordinator	Dana Cassara	workshop@
Membership	Dana Cassara	membership@



The Seattle Metals Guild is a non-profit organization made up of people with varying interests and involvement in traditional and contemporary jewelry and metal arts.

The Guild was founded in 1989 to provide for the exchange of ideas and information, as well as to offer affordable educational opportunities to its members and the public.

Our activities include: a web site, bimonthly newsletter, exhibitions and a series of aesthetic, technical and business workshops and lectures.

The skills, energy and enthusiasm of the Seattle Metals Guild members promote and sustain its successful programs.

We welcome new members and encourage participation by everyone.

The Seattle Metals Guild Newsletter is published bimonthly. Comments, announcements and ads are welcome from all SMG members.

Please contribute to your Newsletter

We encourage participation and welcome information about upcoming shows and events, articles about safety and bench tips you would like to share. If you have comments or something to contribute, please submit your information, generated in a word processing program, via e-mail. Include photos or logo artwork in JPEG format, if available. Remember to provide who, what, when, where, why and how.

Cynthia Wood: newsletter@seattlemetalsguild.org

Deadline for March/April is Feb. 10. Articles received after that date may be published in the following newsletter.

www.seattlemetalsguild.org

Printing provided by Jon Tindall,
of Jewelry Resource and Supply.

Jan/Feb 2009

1425 Broadway #154
Seattle, WA 98122-3813

