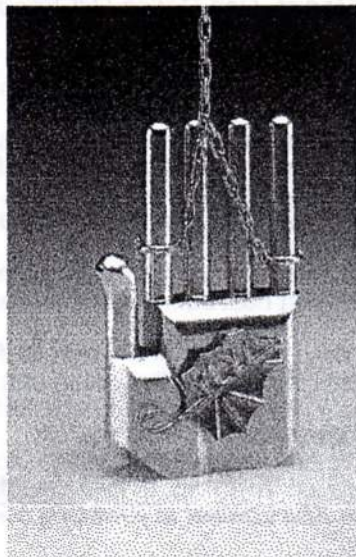


DATE	EVENT	PAGE
Oct 14-18	Jewelry Symposium	1
Nov 14	General Meeting	3

Please look under 'save the date' on page 3 for more

## Jewelry Symposium



Changing Hand Tea Infuser by Tom Muir, 2001  
Photo by Tim Thayer

### The Northwest Jewelry / Metals Symposium

Join other artists, collectors, gallery owners, and students at the Northwest Jewelry/Metals Symposium, a series of events that celebrates jewelry and the metal arts, October 14-18. See the following schedule for an overview of events and contact information. A registration form is included on the back page of this newsletter. The Northwest Jewelry/Metals Symposium is sponsored by the Seattle Metals Guild and Pratt Fine Arts Center.

#### Schedule of Events for 2003

**October 14-17 Master Artist Class and Exhibition** at Pratt Fine Arts Center with artist Beate Eismann. Registration required. For more information, call Pratt at 206-328-2200 or visit [www.Pratt.org](http://www.Pratt.org).

**October 16 Lecture and Reception: Beate Eismann** in the Jewelry Studio at Pratt Fine Arts Center, 7:00-9:00. Refreshments will be served.

**October 17 Reception at Facère Jewelry Art** 5:00 - 7:00 p.m. 1420 5th Ave, Seattle, WA 98101 Tel: (206) 24-6768. View *CHARMED LIVES - A Show of Contemporary Jewelry Art*, curated by Gail M. Brown; meet the lecturers and other symposium attendees. Refreshments will be served.

**October 18 Day of Lectures** at the Seattle Asian Art Museum. Registration required. This event includes a display of speakers' artwork, the sale of jewelry art books from around the world, and a Silent Auction of jewelry crafted by members of the Seattle Metals Guild. For more information, visit [www.SeattleMetalsGuild.org](http://www.SeattleMetalsGuild.org); or contact Joan at [Symposium@SeattleMetalsGuild.org](mailto:Symposium@SeattleMetalsGuild.org) (subject: "Symposium") or Carmen at 206-523-3427.

**October 1-31 Exhibits** featuring art jewelry and metal work at Seattle-area galleries.

#### About the Presenters

**Christine Clark** teaches at and heads the metals department at Oregon College of Art and Craft. Although she teaches traditional metalsmithing and jewelry, Christine's work is primarily sculpture in concrete, steel, and mixed materials. Her work has been included in numerous solo and group exhibitions locally and nationally. In 1999, she was co-curator/editor for *Metalsmith* magazine's Exhibition in Print. She is represented by Alysia Duckler Gallery in Portland, OR. Christine holds a BFA from the University of Washington, and an MFA from Rochester Institute of Technology.

**Keith Lewis** was born in Pennsylvania and received his BS in chemistry from Dickinson College in 1977. After a disastrous stint in graduate school for chemistry, he worked in industry until returning to graduate school in 1990. He received his MFA in Jewelry/Metals in 1993 from Kent State University. He currently is Associate Professor of Art at Central Washington University in Ellensburg, WA.

**Karen Lorene** is the owner and resident appraiser of Facère Jewelry Art Gallery in Seattle, Washington. She has appraised antique jewelry since 1972. She became a Senior Member of the National Association of Jewelry Appraisers in 1995. She has been an appraiser on the Antiques Road Show, and an instructor for the Northwest Gemological Institute in Bellevue, WA, and for the National Association of Jewelry Appraisers in various cities.

**Tom Muir** is a Professor in the School of Art at Bowling Green State University. He has lectured and taught widely at universities and crafts schools around the country. His award-winning work has been published and exhibited extensively, including the traveling exhibit, *The White House Collection of American Crafts*, National Museum of American Art, Smithsonian Institution. He is the recipient of an Arts Midwest/NEA Regional Arts Fellowship, Michigan Council for the Arts Fellowship, and three Ohio Arts Council Individual Artist Fellowship Awards.

## Symposium Cont.

**Maria Phillips** received her BA from Loyola University in 1986 and her MFA from the University of Washington in 1997. She was the PONCHO Artist in Residence at Pratt Fine Arts Center in Seattle, WA, in 1999 and received the Craftsmen's Choice, Merit award, at the Smithsonian Craft Show, Washington, D.C., in 2002. Her work has been exhibited throughout the United States and has appeared in numerous publications, including American Craft, Ornament, and Metalsmith.

### Gallery Exhibits

Visit these and other galleries in the Seattle-Tacoma area during the symposium:

\* **Facèré Jewelry Art Gallery**, 1420 5th Avenue, Seattle, presents CHARMED LIVES - Show of Contemporary Jewelry Art, curated by Gail M. Brown. (206) 624-6768 [www.FacereJewelryArt.com](http://www.FacereJewelryArt.com)

\* **Pratt Fine Arts Center**, 1902 South Main Street, Seattle, exhibits work by German metalsmith Beate Eismann. (206) 328-2200 [www.Pratt.org](http://www.Pratt.org)

\* **Ragazzi's Flying Shuttle**, 607 First Avenue, Seattle; (206) 343-9762

\* **Stonington Gallery**, 119 South Jackson Street, Seattle; (206) 405-4040 [www.StoningtonGallery.com](http://www.StoningtonGallery.com)

**Tacoma Art Museum**, 1701 Pacific Avenue, Tacoma; (253) 272-4258 [www.TacomaArtMuseum.org](http://www.TacomaArtMuseum.org)

## Costa Rica Update

Plans for the trip to Costa Rica are firming up! We have a cost, travel dates, and general itinerary for you as follows:

Cost: \$2700 per person - includes airfare, hotels, most meals, group activities.

Dates: July 24 - August 8, 2004

### General Itinerary:

*Day 1:* fly from Seattle to San Jose, Costa Rica *Day 2:* morning, gold museum, afternoon, drive to Monteverde *Day 3 - 8:* Monteverde - staying at Hotel El Sapo Dorado (gourmet food, gorgeous sunset views, private hiking trails) -- spending at least one day with the children from the Cloud Forest School -- lots to do in the area, many varied hikes in three different cloud forest reserves, horseback riding, Butterfly Garden, Orchid Garden, Serpentarium, Frog Pond, Hummingbird Gallery, slide shows, night hikes, Sky Trek (canopy ziplines), SkyWalk (canopy bridges), salsa dancing, art galleries, artists' studios, organic mountain grown coffee, etc, etc !!

*Day 9 - 10:* Arenal Volcano (considered by many

vulcanologists to be the most active stratovolcano in the world) -- spectacular night views of eruptions, hot springs spa, waterfall hike, fishing, white-water rafting, hiking and horseback riding, of course.

*Day 11-13:* Beach -- we haven't decided precisely which beach yet, but it will be on the northern Pacific side of the country, probably on the Nicoya Peninsula. We will pick a place with multiple activity options including, hiking, bird-watching, possibly turtles (depending on season), snorkeling, swimming, sun-bathing, and, of course, fruity alcoholic drinks :).

*Day 14-15:* Back to San Jose, the capital city, for more museums, galleries, and shops. Jade Museum, National Museum, Central Market, Don Carlos Gift Shop (best in the country).

*Day 16:* Fly back to Seattle and sleep in your own bed!

Some of the activities listed above we will do as a group and the cost for those is included in the cost of the trip. Other activities, like Sky Trek, horseback riding, fishing, and white-water rafting, will be at the discretion and expense of the individual. The plan is to leave plenty of unscheduled time in the itinerary so that participants can choose the activities that best suit or most interest them.

We want to keep this group small enough to fit in one van. That means that the largest the group can be is 12 people. Julia, who is leading this trip, and her partner would take up 2 of these spaces, so if you are interested in joining this group you need to act now to get your name on the list! To do this, or for more information, please e-mail or call Julia Lowther at [jlowther@eskimo.com](mailto:jlowther@eskimo.com) or (206) 527-6280.

## Studio Tour Review

### Studio Tour 2003 Impressions

The tour began with a visit to Jana Brevick's. As I reconnected with friends I hadn't seen for some time, my eye was caught by Jana's ongoing slide show of her work in a small tabletop slide projector—what a fabulous idea for showing a body of work efficiently to a continuous stream of viewers!!

The second studio was Peter Reiquam's spotless large-scale metalwork and fabrication workshop. We were awed by his shop setup, news of a water jet cutter for cutting intricate forms in almost any material, his ambitious plans for his shop addition, his business skills, a full working flame throwing car, and a unique kitchen cart with a huge metal ball as the front wheel!!

On to Nancy Worden's recently remodeled full house studio with separate areas for design work, casting, electroforming, fabrication, and office work, among others, aided by water views and ample space. We stayed at Nancy's for a potluck on the lawn enjoying the warm spring weather.

As usual, the food was scrumptious, the conversations fascinating, and it was a great way to catch up with all our metals friends. Thank you, SMG, again, for a great day!! Joan Tenenbaum

