



Ramona Solberg

Announcing the New SMG Scholarship Program

The Seattle Metals Guild has been dedicated to fostering educational opportunities to its members and the public since it was founded in 1989.

The steady growth of the Guild has enabled us to excitedly announce the new **SMG Scholarship Program!** This program is comprised of 5 different scholarship and grant opportunities available to jewelry and metal artists in the Pacific Northwest, which is comprised of Alaska, Idaho, Oregon and Washington.

We have chosen to name these opportunities in memory of five individuals who best represent the finest in our field. In doing so, we hope to create an awareness of our community's history and its tradition of metal arts in the Pacific Northwest. These scholarships are:

- The Ramona Solberg Travel Grant
- The George Mclean Specific Project Grant
- The Ruth Pennington Teaching Grant
- The Kris Williams Continued Education Scholarship
- The Sharon Boardway Matriculated Student Scholarship

continued on page 2



George Mclean



Ruth Pennington



Kris Williams



Sharon Boardway

continued from page 1

SMG Scholarship Program

These programs were crafted intentionally to reflect the diversity of our Guild in hopes that there is something for everybody. The scholarships and grants offered represent opportunities for growth for both the recipient and the Guild.

In exchange for a Seattle Metals Guild scholarship or grant, recipients are asked to make a presentation to the general membership on the specific project or experience that the scholarship or grant allowed them to carry out. The presentation is intended to create a dialogue between members and to share experiences.

A formal announcement of this new program will be presented during the general meeting held on Nov 9, 7pm on the University of Washington campus. Also, be sure to check the SMG website for updates, scholarship descriptions, and application procedures.

The scholarship committee is a subcommittee of the SMG board, formed in June of 2007. It's comprised of SMG members Jena Hounshell, ET Kessler, John Castor, Lynne Hull and Dana Cassara.

Member News

Membership Dues Deadline Change

The Seattle Metals Guild wants to remind its members that the fiscal year has been changed to now begin in January. This means if you paid dues in 2007, you get a few months for free, and it also means that annual membership renewal will happen January 1st. If you sent in membership dues already, they will automatically be applied to the 2008 year. Membership forms are always printed in the newsletter.

Thank you so much for your loyalty!

Artist as Collector The Ornament

The SMG Ornament Show is sponsored by North Seattle Community College. **The opening for the public is Nov 13, 2007 at North Seattle Community College.**

The SMG exchange and party will be Dec 1, Sat 6:30 to 9:30. Bring an ornament and food to share. This is a great time to support other metal artists by showing their work.

SMG still needs your ornaments!!!

If you have not yet dropped off your collection of ornaments, please call John Caster at 425-673-6391 to make arrangements.

This show will be most successful if it promotes metal arts by showing a variety of styles in our community! Your ornaments will help do this!

Thank You to North Seattle Community College.



The Seattle Metals Guild would like to extend a special "Thank You" to Lynne Hull and the jewelry program at North Seattle Community College.

North Seattle Community College has supported the Guild by hosting workshops, including recent classes with Deb Lozier and David Freda, and by providing work space to members for the biennial show.

Thank you!

Events	
Date /Event	Page
Nov 9: Seattle Metals Guild General Meeting	
Nov 11: SMG Women's Shelter Jewelry Project	4
Nov. 13 - Dec. 7: Artist as Collector	
Nov. 16: Three Muses Studio Reception at Danaca Design Studio	3
Dec. 8: Danaca Design Four Year Anniversary Party	4
Jan 18 - 20: Porcelain Paper Clay Master Class	4
Jan 30: Animalés.....	4
Contents	
SMG Scholarship Program.....	1
Member News:	
Dues Deadline Change.....	2
Ornament Show Reminder	2
Events:	
Three Muses Studio Reception at Danaca Design Studio	3
Danaca Design Four Year Anniversary Party.....	3
Animalés Contemporary Jewelry Art Show.....	4
SMG Women's Shelter Jewelry Project	4
Porcelain Paper Clay Master Class.....	4
Reviews:	
Joan Tenenbaum at Stonington Gallery.....	5
250 Earrings at Faceré Art Gallery.....	6

Events

Birna Sigurbjornsdottir



*Montana Agate
by Amy Hoins*



*Droplet Winter
by Angela Muhl nickel*

Three Muses Studios

a reception hosted by
Danaca Design and the
Metal Crafting Center

Alongside our daily schedule of classes Danaca Design and the Metal Crafting Center will host two events this season. In November we are delighted to fill our gallery with stylish and hip jewelry from the hands of three lovely women: **Birna Sigurbjornsdottir, Amy Hoins and Angela Muhl nickel**. These women work independently in a shared space in Pioneer Square, the fittingly named **Three Muses Studios**. We will host a reception for them, **Friday November 16th, 6-8:30pm**, please join us! Danaca Design and the Metal Crafting Center is located at 5619 University Way NE, Seattle, WA 98105



*Chrissy's Pad Lock
by Chrissy Burd*

Happy Anniversary!

Expect great food, fun and a super exhibit of student work when Danaca Design and the Metal Crafting Center celebrates its fourth year of blazing torches and swinging hammers on University Way! **Join us for our four year anniversary party, Saturday evening, December 8th, 6-10pm**, (okay probably later). This is our biggest event of the year and not to be missed!



*Joe's Engagement Ring
by Joe Burd*



*Green Amethyst Ring
by Judy Milton*



*Caitlin's Locket
by Caitlin Bowers*

Coming to the Pacific Northwest in January!

The Ranch. Center for Arts & Craft offers a variety of Master Classes featuring some of the finest Artists in the country

Porcelain Paper Clay Master Class – Jerry Bennett

10am – 4pm ADULT

Jan 18 – 20

Course #078W212 \$350. (limited to 8 participants)

Call for additional information: 360-568-7709

Explore Paper Clay: a 3 Day workshop which will focus on the use of this innovative material to make both functional pottery and sculptural forms. We will review how to make paper clay, bonding slips, and using it for hand-building ceramic forms. The instructor will use slides to illustrate forms that can be constructed with paper clay, and he will demonstrate such forms as cups, pitchers and teapots to give students a sense of the materials' potential. The class will also explore the use of texture, construction techniques, and decoration using paper clay. This is a hands-on workshop so please bring basic hand-building tools with you to the workshop. We will provide paper clay for you to experiment with.

This is not an SMG sponsored event, those interested should contact The Ranch where it is being held.

The Ranch. Center for Arts & Craft www.ArtatTheRanch.com



Animalés

A Contemporary Jewelry Art Show
Jan. 30 - Feb. 16, 2008

Lecture:

4pm Wednesday, Jan. 30, 2008

Opening Reception:

Wednesday, Jan. 30, 2008

from 5 - 7pm

Please RSVP 206-624-6768
due to limited seating.

Facere Jewelry Art Gallery will feature the work of nine contemporary studio jewelers presenting a bevy of animal inspired sculpture to wear in metal, glass, polymer clay, and found objects. Preview Animalés online at the Facere web site: www.facerejewelryart.com



Seattle Metals Guild Women's Shelter Jewelry Project

The goal of this program is to collect unused or broken jewelry that is sitting in the dark, in women's jewelry boxes all over the city, sort it, clean or repair it, and pass it on to women's shelters and other agencies that serve disadvantaged women in the Seattle/Bellevue, Snohomish area.

A lot of jewelry has been collected and needs to be sorted before the holiday season. If you are interested in helping, please join us at the next sorting in the back jewelry studio at Pratt in the central district on Sunday November 11th between 10am and 4pm.

See you there!

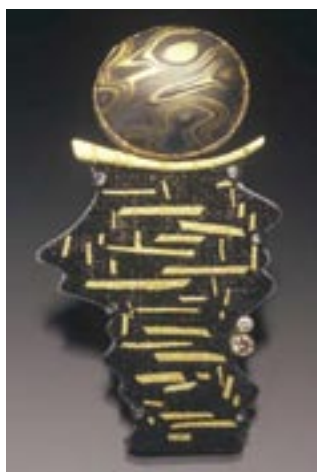
Joan Tenenbaum at the Stonington Gallery

by Hellyn Pawula

Joan Tenenbaum's current jewelry exhibit at the Stonington Gallery, www.stoningtongallery.com, in Pioneer Square, Seattle, "The Artist Linguist: Translating Field Research into Wearable Art" is significant artistically, historically and intellectually. It is a visual statement based on the time she spent living and working in the Dena'ina Athabaskan village of Nondalton, Alaska. As a Ph.D. candidate field linguist she recorded, transcribed and translated much of the community's oral folklore. Unfortunately, the Athabaskan language and its cultural traditions are threatened with extinction, as are many native languages.

Joan's attendant lecture gave insight into the people, their hunting and gathering, their relationship to the land and the weather, and the importance of their oral heritage. Just as important was Joan's response and involvement as she sought to adjust to this unfamiliar environment and her loneliness. Her determination to participate fully in the work and activities of the community and to learn and transcribe their language is just as evident in her determination to master the many technical processes utilized in this exhibit's jewelry art. Three pieces exemplify the scope of her experience.

Although less obviously narrative than the folktale pieces, *Moon Over Sixmile Lake* evoked the loneliness and isolation Joan felt during her first weeks in Nondalton when she would seek solace at the lake. On dark nights, the moon's reflection made an ever-changing path across the lake. This visual has been stunningly expressed with a mokume gane moon shimmering over damascene lake reflections and punctuated by champagne and white diamonds, symbolizing headlands. This archetypal image elicits Carl Jung's creative unconscious – universal, ancient to modern.



"Moon Over Sixmile Lake: Headlands in Moonlight V"; Brooch, Sterling, 18K Gold, Mokume Gane (22K/Sterling), Damascene (24K/Steel), Champagne and White Diamonds, .01 tw, 2 1/4 x 1 1/4 x 3/8".

The traditional folktale, *Foggy Woman: A Dena'ina Story*, tells the poignant story of love found and lost. As he was hunting, a young man encountered a young woman on the mountain. All summer he asked her to come home with him, but she refused. Finally she relented, but when they came to his camp, it began raining. Day after day it rained and was foggy, so the people could not hunt and their food began to run out. This was because of her. So they wrapped their baby in a blanket and started up the mountain. When it was far enough he sat and she continued on. As she went the fog lifted with her; it stopped raining and the sun started shining. The man wiped his eyes and looked into the valley where there were thousands of caribou to hunt. It was good again.

The gestural desperation of the young man as his woman walked away, accompanied by the rain, is expressively enhanced through the inlaid gold damascene and the pierced tears falling on his cheek. Anatomy is simplified to essential forms thus intensifying the emotive impact. The textural contrasts: roller printing, engraving, inlay and twisted wire, and color variation, although subtle, artistically enrich the cultural narrative.



"Foggy Woman: A Dena'ina Story"; Brooch, Sterling Silver, 14 Karat Gold, Copper, Damascene (24K/Steel), 2 1/2 x 2 1/8 x 1/4".

Walking Towards Obscurity VII: Choices states the dilemma facing many isolated areas. Surrounding Nondalton, there were many game trails; the land teemed with wildlife; salmon were plentiful, essential to the Tanaina people. The land was pristine, cultural traditions endured. Now thirty years later, there is a proposal to bridge the Newhalen River at the point where their fish camps are located. Also, there are potentially huge copper and gold mines on the other side of the river.

Critical choices are graphically stated not only with opposing images, but again through textural contrasts: birch bark, wolf tracks, perhaps the river or is it a modern highway? The graphic granite implies writing, a message. Burr-engraved on the back of the piece is the question, "Who will remember?" These choices will impact their land, their food, their language, their heritage, and, ultimately, their reliance on the bounty of nature.

In the exhibit, there are many pieces visually illustrating Dena'ina folk tales, including earrings and complex necklaces, each accompanied by a personal story or translation of its folk tale. The work stands alone, but Joan's opening-night slide lecture added understanding, empathy, and vicarious participation for those of us who attended. The book, which resulted from Joan's Ph.D. dissertation, [Dena'ina Sukdu'a, Traditional Stories of the Tanaina Athabaskans](#), is folklore transcribed and translated from her field research and is beautifully illustrated with woodblock prints by Dale DeArmond. It is available in its third edition at the gallery.



"Walking Towards Obscurity VII: Choices"; Brooch, Sterling Silver, 18 Karat Gold, Graphic Granite, 2 1/4 x 2 x 1/4".

The integration of master metalworking techniques, the choice of format to express each concept or story, and texture and color variation—all have resulted in a cohesive distillation of a pivotal experience to her life and creativity, with content and emotive impact—the essence of a true artist.

Reviews

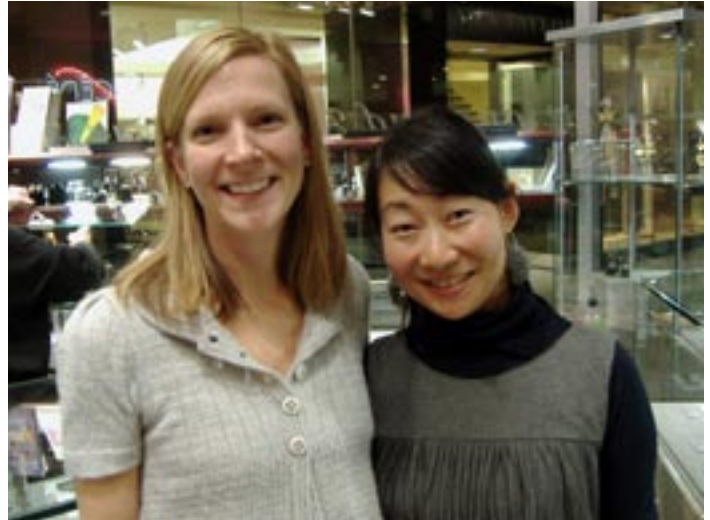
250 Earrings at Faceré Art Gallery

To celebrate the publishing of the Lark book, 500 Earrings, Faceré Art Gallery showed over 250 pairs of earrings. 29 national artists who are all featured in the book were represented. The show ran October 8 - October 27th with an opening and lecture on Monday October 8th.

The earring book is the most recent publication in a series of jewelry books published by Lark, in which each book focuses specifically on one form of jewelry. These books are aimed at a very general craft audience, and intentionally try to offer examples that will intrigue advanced jewelers, beginning jewelers and collectors. Not only does this strategy follow their motto to “celebrate the creative spirit,” but it also informs and educates the general public on the variety of jewelry that is being created. The examples juried for the book shows a spectrum from traditional to contemporary art jewelry.

Faceré’s choice in participating artists in their earring show honored this aspect of the book. A wide variety of techniques and materials were represented.

Faceré is not the only gallery that curated a show to celebrate this publication. Velvet da Vinci is another West coast gallery located in San Francisco whose earring show is running from October 17th through November 25th. The popularity of these shows proves how important published images of jewelry work is to promote the field of art jewelry and educate the public.



Sarah Hood and Yuka Saito, artists showing in Faceré’s 250 Earrings



MEMBERSHIP FORM

Today’s Date _____ New Member Renewing Member Check if contact info has changed

Name _____ Organization (If applicable) _____

Address _____

City _____ State _____ Zip _____ Country _____

Daytime Phone _____ Evening Phone _____

Email _____ Fax _____

Check if you do NOT want your address or phone published in the SMG directory

Check if you do NOT want your SMG newsletter in electronic form only

(Help the guild save money and resources by viewing your newsletter online. You will receive email notification when each newsletter is available. Check the box only if you want to receive a paper copy of the newsletter in addition to the electronic version.)

Enclosed is: \$45 Individual membership (9/1/2007 – 12/31/2008) \$20 Student w/copy of student ID

\$60 Membership for any number of adults at same address (9/1/2007 – 12/31/2008)

I can help with: Newsletter Mailings Bead Necklace Exhibits Workshops and Events

Symposium Educational Outreach Misc. – Call me for specific tasks as needed

Other skills I can offer to SMG _____

Send checks payable to Seattle Metals Guild, 1425 Broadway #154, Seattle, WA 98122-3854

Market Place

Note: Ads will run for one issue. If you wish to resubmit you must do so by each newsletter deadline.

V&O Lapidary

Handcrafted Designer Cabochons
vo_lapidary@msn.com
North Seattle

V & O Lapidary... Crafters of fine cabochons... See us for the one-of-a-kind stone you can never find. We can custom cut for that special project lurking in your sketch book. Contact us at (206)364-9278 or vo_lapidary@msn.com. Be sure to check our offerings at Jewelry Resource & Supply in Fremont.

The Astragal Press

www.astragalpress.com

Our company, the Astragal Press, is an independent publishing company based in Mendham, NJ. We publish unique books devoted to the subjects of metalworking trades (such as copper and blacksmithing), woodworking antique tools and early sciences.

Many of our books are historically based and are an excellent resource for students, collectors, historians, curators, academics or just plain lovers of history. Our books have been carried by such institutions as *The Colonial Williamsburg Foundation*, *Mystic Seaport*, *The National Ornamental Metal Museum*, *The United States Post Office Store*, *Winterthur Museum*, among others.

Resources

Danaca Design

Metal Crafting Center and Gallery
5619 University Way NE, Seattle 98105
206/524-0916

Metal Crafting Center is an 8-bench jewelry fabrication studio on the quiet end of 'the Ave'. We offer a quarterly schedule of unique workshops, open studio hours and house a diverse and fine store front gallery. Find out all there is to know about the shop on line at www.danacadesign.com.

The Alchemist's Casting Shop

Seattle, WA 98126 (206)933-9255
the-chemist@comcast.net

High quality production casting services in platinum, gold, silver, bronze. RTV, vulcanized silicone and rubber molds. Metal fabrication, wax carving to specifications. Visa/MC accepted. Call for a free consultation.

Jewelry Resource & Supply

Greenwood and Leary Way
3601 Greenwood Ave. N
Seattle, WA 98103 • (206) 632-7005

Seattle Jewelry Resource & Supply, your one stop shop for all your jewelry and metalworking needs. Rent our studio space and put your new skills to work! With a full supply store we're sure to have whatever tools you need to create your art.



Fourth & Pike Building
1424 Fourth Avenue – Suite 204
Seattle, WA 98101
(206) 682-7020

Seattle Findings & Supply center is your premier source for jewelry findings, tools, equipment, supplies and metals. We are located in the heart of Downtown Seattle at the center of the jewelry district. Stop by our showroom or give us a call and we can ship orders directly to you. Also, be sure to visit us online at www.seattlefindings.com.

Schools

Bellevue Community College

300 Landerholm Circle SE
Bellevue 98007-6484
(206)641-2263

Bellevue Community college offers classes and workshops in Jewelry and Metalsmithing at affordable prices. View our website at <http://www.bcc.ctc.edu>, click on Continuing Education, then ARTS.

North Seattle Community College

9600 College Way N., Seattle
(206)527-3600
<http://nscucc.sccd.ctc.edu>

The Seattle Community College system offers jewelry design and light metal fabrication at its North campus. The facilities are some of the best in the country with torches at every bench, and all the necessary hand tools needed to construct fine jewelry. The studio has designated hot and cold working areas and a complete casting setup for gravity and centrifugal processes. The sheet metal equipment includes a metal shear, box brake, metal lathe, and milling machine. There is also basic lapidary equipment available for stone cutting and polishing. For more information, contact Lynne Hull at (206)526-0062 or the Humanities department at (206)527-3709.

Oregon College of Art and Craft

8245 SW Barnes Rd., Portland Or 97225
(503)297-5544 www.ocac.edu

Pratt Fine Arts Center

1902 South Main Street, Seattle 98144
(206)328-2200

Pratt Fine Arts Center, Seattle's premier studio for the visual arts, provides unparalleled opportunities to artists in its world-class studios for glass, sculpture, jewelry, metalsmithing, painting, drawing and printmaking. Courses and workshops are available for beginning as well as advanced students. Open lab times are available for independent artists during the week and on many weekends. Please call for a full schedule and a registration packet.

South Seattle Community College

6000 16th Avenue SW, Seattle 98106
(206)764-5352

South Seattle Community College remains the best-kept secret in the greater Seattle area. Craftspersons of every discipline are delighted to discover that the finest educational welding fabrication facility (possibly in the universe) welcomes both vocational and recreational students. We got the stuff! Calling ahead is best, but you're OK to stop by anytime. Sessions Mon-Fri, 7am-12pm, and Mon/Wed or Tue/Thu evenings. Call John Todd, (206)764-5352, (206)764-5359(w), or (206)283-5069(h). E-mail to jtodd@sccd.ctc.edu

Opportunities

www.bdina.com

I have recently launched an online jewelry gallery and currently have available opportunities to showcase at bdina.com. Interested artists can contact Dina Baloyan at info@bdina.com.

About www.bdina.com

B.Dina jewelry features limited-edition and one-of-a-kind handcrafted jewelry created by independent artists. The selection is purposely diverse and fresh exhibiting work by up-and-coming artists as well as seasoned contemporary art jewelers.

2006-2007 SMG Board of Directors

All addresses are suffixed with "@seattlemetalsguild.org"

President	Jennifer Howard-Kicinski	206-227-2207	president@
Vice President	John Caster		vicepresident@
Secretary	Jennifer Stenhouse		secretary@
Treasurer.....	Roland Crawford	206-749-0747	treasurer@
General Board	Aaron Barr		board2@
General Board	Dana Cassara		board3@
General Board	Jessie Wylie		board5@
General Board	Kiraya Kestin		board6@
General Board	Amy Hoins		board7@

SMG Services

Newsletter Editor	Jena Hounshell		newsletter@
Library	Jonathan Tindall		librarian@
Symposium Coordinator...	Roland Crawford	206-749-0747	symposium@
Workshop Coordinator ...	Workshop Committee		treasurer@
Membership	Judy Kuskin		membership@



The Seattle Metals Guild is a non-profit organization made up of people with varying interests and involvement in traditional and contemporary jewelry and metal arts.

The Guild was founded in 1989 to provide for the exchange of ideas and information, as well as to offer affordable educational opportunities to its members and the public.

Our activities include: a web site, bimonthly newsletter, exhibitions and a series of aesthetic, technical and business workshops and lectures.

The skills, energy and enthusiasm of the Seattle Metals Guild members promote and sustain its successful programs.

We welcome new members and encourage participation by everyone.

The Seattle Metals Guild Newsletter is published bimonthly. Comments, announcements and ads are welcome from all SMG members.

Please contribute to your Newsletter

We encourage participation and welcome information about upcoming shows and events, articles about safety and bench tips you would like to share. If you have comments or something to contribute, please submit your information, generated in a word processing program, via e-mail.

Include photos or logo artwork in JPEG format, if available. Remember to provide who, what, when, where, why and how.

Jena Hounshell: newsletter@seattlemetalsguild.org

Deadline for Jan/Feb is December 10. Articles received after that date may be published in the following newsletter.

www.seattlemetalsguild.org

Printing provided by Jon Tindall,
of Jewelry Resource and Supply.

Nov/Dec 2007

1425 Broadway #154
Seattle, WA 98122-3813

