

Maria Cossio



Ada Rosman



Gabrielle Fitzgibbon

University of Washington
2007 BFA Thesis Exhibition

Page 5.

Annual Financial Report on
the Seattle Metals Guild

Page 2.

Make Your Opinion Heard!

*Fill out the questionnaire regarding
a Guild member show or sale.*

Page 7.

Annual Financial Report on the Seattle Metals Guild

During 2006 The Seattle Metals Guild board instituted changes to help clarify our financial record-keeping. We changed our financial year from Sept.1 – Aug.31 to the calendar year Jan.1-Dec.31. We merged all previously independent parts of financial operations of the Northwest Jewelry and Metals Symposium into the overall financial operations of the Seattle Metals Guild. Our budget categories have been simplified as detailed to the right. Also please look in this newsletter for an important note about changes in board member voting and especially the extended membership time period.

Our membership numbers hold steady at around 150 in a dance of the incoming and the outgoing. We anxiously uncovered a problem with some membership checks disappearing in the mails in early August '06. If you have evidence of having written a membership check to SMG at that time but your membership was not renewed, please, please get in touch with the Guild treasurer. We want to keep everyone connected! We're working on improving our registration and publicity systems for all Guild activities and expect to see a steady membership increase over the coming months.

This Membership Year Gets Stretched

Hey Guild members!
Check this out:

The current membership year has been extended until the end of this calendar year! You get an extra four months of privilege, fun and frolic this year! The SMG board has aligned our diverse parts into the same schedule so now we're all on the same page - kinda' like a well oiled machine [see treasurer's annual report]. This means you'll renew your membership each January and that's when we'll invite new voted board members onto the board. Therefore we'll be holding board member elections in November of this year instead of earlier in the year. We'd be happy to see any new faces sitting in on our board meetings that usually happen the first Monday of each month.

All this shifting means the board is trying to make the Metals Guild a bigger and more beautiful creature that no one can resist joining. Get your friends, relatives and neighbors down the street to send in a membership form today. If you have any questions contact one of the board members near the top of the list on the last page of the newsletter. We'll do a little dance for you by email to keep you committed to our happening group, our golden escalator into metals heaven, our locomotive of industriousness, the be all and end all. Keep Those Fires Burning!

During the twelve month newly established calendar year financial period January 1, 2006, thru December 31, 2006, the Seattle Metals Guild income and expenses were as follows.

Income:

1) Symposium and its workshops	\$11,780
2) Memberships	\$5,965
3) Workshops	\$3,400
Total Income	\$21,145.00

Expenses:

4) Educational	\$12,608.27
5) Media	\$3,194.77
6) Office	\$3,045.57
7) Exhibitions	\$367.78
8) Member Events	\$1,667.77
Total Expenses	\$20,884.16
Net profit/loss	+\$260.84

Each of the expense categories 4-8 listed above include the following line items: 4) "Passing The Torch", the lecture series, scholarships, SMG library books, the Symposium, workshops; 5) all printing and paper costs for newsletter and postcards, web-site maintenance and E-services; 6) mail box rental, insurances, all postage and mailing costs; 7) juror fees, facility costs, Pratt necklace; 8) Ornament party, annual board retreat, swap meet, studio tours, entertainment(s).

-Submitted February, 2007, by Roland Crawford, treasurer, Seattle Metals Guild

Events

Date /Event	Page
April 7: Women's Shelter Jewelry Project	3
April 12: Lecture Series – Christine Clark	3
April 17: UW 2007 BFA Thesis Exhibition Opening	5
May 12: Annual Swap Meet	3
June 2: Studio Tour	3
Through June 17: Women's Tales – BAM	
Oct 20: Symposium 2007	3

Contents

Board News	2
Member News	3
Community	3
Review: The Artist Life of Lezlie Jane	4
Review: Ugo Serrano	4
UW 2007 BFA Thesis Exhibition	5
Classified	6
Guild Member Show/Sale Questionnaire	7

Member News

Jennifer Howard Kicinski to Run Down Leukemia and Lymphoma

Jennifer will be running a 26.2 mile marathon in San Diego, California on June 3, 2007 to raise money for the Leukemia and Lymphoma Society. To find out more, or to donate money please go to <http://www.active.com/donate/tntwaak/tntwaakJHoward>, or contact president@seattlemetalsguild.org.

Community

Dear Guild Members

My name is Pamela (Greenleaf) Conley and I live in Billings MT. I would like to know if you are familiar with a art that my mother used to do with us in the 60's. I believe it is called "Sgraffito". The way it worked was that you took a piece of copper that comes in shapes and sprinkled ground glass on the surface. This was then heated carefully in a small kiln until the glass melted. Then small pick tools were used to swirl the glass into designs. Do you know if this art still exists? I am searching for a place that sells the supplies and perhaps the small kilns. If you have any information on Sgraffito or if this is not the correct art name, please let me know. I very much would like to get back into this art as it was very enjoyable. I appreciate your help in this matter and hope to hear from you soon. Most sincerely, Pamela (Greenleaf) Conley. Freedancer50@aol.com

Start Your Summer Right!

Mark your calendars for the annual Seattle Metals Guild studio tour: Saturday, June 2, 2007! This year the tour will take you into three impressive studios all within easy walking distance from one another in the University District. Discover a wide range of studio possibilities from the notably eclectic studios of Cynthia Toops and Dan Adams to the delightfully intimate workspace of Betsy Resnick finishing at the studio and teaching facility of Danaca Design and the Metal Crafting Center. Be sure to check the next newsletter for details!



Come and join the WORK DAY

April 7, 10am

Join us at Pratt and be a part of the Women's Shelter Jewelry Project. We will be fixing and cleaning the jewelry that has been collected. This is an easy way to really make a difference in women's lives.

Questions: email Micki Lippe - mickilippe@comcast.net

Save These Dates

Symposium 2007

Saturday Oct 20, 2007

Mark your calendars now for the SMG educational and social event of the year: The Northwest Jewelry and Metals Symposium 2007, happening all day Saturday October 20, 2007. The location is the Museum of History and Industry (MOHAI) at the 'Montlake Cut' near the University of Washington. Admission will be the same as last year and there will be plenty of free parking. One of our headliner speakers will be the team of Denise and Samuel Wallace, having just opened their nationally touring exhibition in Fairbanks, Alaska, two years after its start at the Smithsonian. Check out their work in the remarkable book *Arctic Transformations...*, by Lois Sherr Dubin. Another headliner will be David Freda, a consummate craftsman now showing his gold and enameled orchids exclusively with Tiffany & Co. Check out his work on pages 32-33 of *Metalsmith* magazine vol.26 #5, 'Fall '06.'

There will be a reception the Friday night before and at least three workshops around the event taught by Symposium speakers. In addition to the much appreciated book sales the day of the event from Charon Kranson Arts, we'll feature a vastly expanded silent auction, more space for special exhibitions, improved lunch services and a few surprises! Questions, comments, volunteers may be directed to symposium@seattlemetalsguild.org Watch this newsletter for more information in the coming months!

Annual Swap Meet

May 12, 2007

10:00am until 2:00pm

Join the fun at Jewelry Resource Supply, 3601 Greenwood Ave. N Seattle, WA 98103, in Fremont.

See you there!

“Doin’ It My Way” The Artist Life of Lezlie Jane

SMG Lecture Series January 11, 2007

by Roland Crawford

Lezlie Jane presented an amazing variety of work spanning many years. At the same time as she was developing and expanding her creative work, she made it clear that to make ends meet as an artist/craftsman one needs more than one avenue for earning a living. One needs a plan “B”. Armed with a diverse selection of 75 slides, Lezlie Jane shared her remarkable evolution as an artist in many media, revealing a staggering lineage of creations mostly in the metal arts spanning 35 years. There were photos of workshops and studios, bronze sculptures, enameled steel panels, concrete and glass castings, ceramic tile mosaics and monumental public park installations, all amidst a continuous outpouring of original, high-end, mostly gold and precious stone jewelry. It was a challenge to look beyond the art and recognize Lezlie Jane’s plan B was the hands-on development of small homes and properties, in part financed by and made more creative by her myriad artistic productions.

Though Guild attendance was reduced by threatening freezing weather, Jane felt the audience was sufficient and attentive as she set the tone by reading lines from a song popularized by Frank Sinatra, “My Way”. Her slides chronologically marked larger projects starting in the 1970’s, both commissions and speculative pieces, punctuated by her rapid-fire commentary. It seemed every other slide was a tasty piece of gold jewelry often set with faceted stones, to which Jane chanted the mantra: “...and

at the same time I was making jewelry...” She started her jewelry training under Hellyn Pawula, showed at the Bellevue Arts Fair in the late 70’s, at galleries around the country, got the GG degree at GIA, took classes at the U of W, Pratt, Gage Academy, Pilchuck and in Italy. What I had to coax from her later was the clarification that all works we had seen in those slides were pieces she had done by herself, in her way.

One can visit the three outdoor waterfront parks Lezlie Jane has created along Beach Drive off of Alki Point in West Seattle. The first and smallest is called “Weather Watch Park,” the second, just south of the lighthouse, is “Constellation Park and Marine Reserve.” The installations are too numerous to list but look for the “Inter-tidal Marine Life Interpretive Wall,” frequently visited by school groups. The most recent is “Cormorant Cove Park” featuring a lookout plaza with interpretive displays on the sights one might see from the lookout.

After her dizzying array of slides of art and landscaping projects, Lezlie Jane summed up by noting that through her career she has stayed in the arts, explored many media, gained recognition, and been challenged by adventures while being inspired to work her own hours. She has stayed financially solvent and will be able to retire at 65 without needing to work, due to her plan B. Now in hindsight she would not have done it any other way.

Ugo Serrano

SMG Lecture Series February 8, 2007

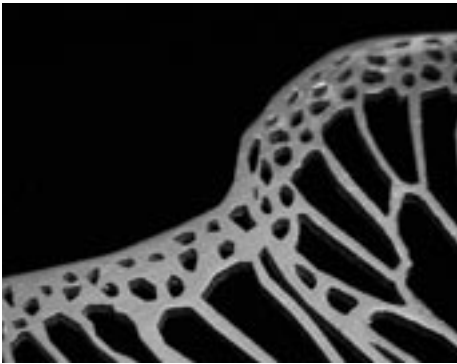
by Jena Hounshell

What does Ugo Serrano do for fun? He works. Serrano explains the quantity of his work by saying, “sometimes the muse screams at you and you have to submit.” His muse started getting his attention at an early age and has taken him on a journey that leaves him with an impressive portfolio of wearable armor that has been featured in movies like “Witchblade” and “Planet of the Apes.”

His first experiments came from his mother’s closet when he was young, where he was often found rummaging for the ingredients for costume designs. At about this age, he also began drawing. Sketches that worry most parents came naturally from Ugo and he realized he was just a “normal kid with a different take on aesthetics.” Since then, he has maintained a strong loyalty to this innate aesthetic.

continued on page 7





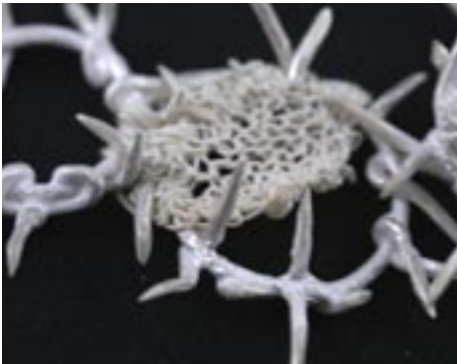
Sophia Shen



Adrianna Fie



Zenaida E. Olivas



Maria Cossio

University of Washington
2007 BFA Thesis Exhibition

Exhibition Opening
Tues, April 17 4:30 – 6:00 pm.
Jacob Lawrence Gallery.
at the UW School of Art

Exhibition Dates:
April 18 – 28
Tues – Sat 12-4 pm.



Ada Rosman



Elise McKinney



Holly Lendosky



Camille Keys



Gabrielle Fitzgibbon



Liz Worth



Midori Saito

Market Place

Note: Ads will run for one issue.
If you wish to resubmit you must do so
by each newsletter deadline.

V&O Lapidary

Handcrafted Designer Cabochons
vo_lapidary@msn.com
North Seattle

V & O Lapidary...Crafters of fine cabochons...
See us for the one-of-a-kind stone you can
never find. We can custom cut for that special
project lurking in your sketch book. Contact
us at (206)364-9278 or vo_lapidary@msn.com.
Be sure to check our offerings at Jewelry
Resource & Supply in Fremont.

Resources

Danaca Design

Metal Crafting Center and Gallery
5619 University Way NE, Seattle 98105
206/524-0916

Metal Crafting Center is an 8-bench jewelry
fabrication studio on the quiet end of 'the
Ave'. We offer a quarterly schedule of unique
workshops, open studio hours and house a
diverse and fine store front gallery. Find out
all there is to know about the shop on line at
www.danacadesign.com.

The Alchemist's Casting Shop

Seattle, WA 98126 (206)933-9255
the-chemist@comcast.net

High quality production casting services in
platinum, gold, silver, bronze. RTV, vulcanized
silicone and rubber molds. Metal fabrication,
wax carving to specifications. Visa/MC ac-
cepted. Call for a free consultation.

Jewelry Resource & Supply

Greenwood and Leary Way
3601 Greenwood Ave. N
Seattle, WA 98103 • (206) 632-7005

Seattle Jewelry Resource & Supply, your one
stop shop for all your jewelry and metalwork-
ing needs. Rent our studio space and put your
new skills to work! With a full supply store
we're sure to have whatever tools you need
to create your art.



Fourth & Pike Building
1424 Fourth Avenue – Suite 204
Seattle, WA 98101
(206) 682-7020

Seattle Findings & Supply center is your pre-
mier source for jewelry findings, tools, equip-
ment, supplies and metals. We are located in
the heart of Downtown Seattle at the center
of the jewelry district. Stop by our showroom
or give us a call and we can ship orders di-
rectly to you. Also, be sure to visit us online at
www.seattlefindings.com.

Schools

Bellevue Community College

300 Landerholm Circle SE
Bellevue 98007-6484
(206)641-2263

Bellevue Community college offers classes
and workshops in Jewelry and Metalsmith-
ing at affordable prices. View our website at
<http://www.bcc.ctc.edu>, click on Continuing
Education, then ARTS.

North Seattle Community College

9600 College Way N., Seattle
(206)527-3600
<http://nscuccx.sccd.ctc.edu>

The Seattle Community College system offers
jewelry design and light metal fabrication
at its North campus. The facilities are some
of the best in the country with torches at
every bench, and all the necessary hand tools
needed to construct fine jewelry. The studio
has designated hot and cold working areas
and a complete casting setup for gravity and
centrifugal processes. The sheet metal equip-
ment includes a metal shear, box brake, metal
lathe, and milling machine. There is also basic
lapidary equipment available for stone cutting
and polishing. For more information, contact
Lynne Hull at (206)526-0062 or the Humanities
department at (206)527-3709.

Oregon College of Art and Craft

8245 SW Barnes Rd., Portland Or 97225
(503)297-5544 www.ocac.edu

Pratt Fine Arts Center

1902 South Main Street, Seattle 98144
(206)328-2200

Pratt Fine Arts Center, Seattle's premier studio
for the visual arts, provides unparalleled op-
portunities to artists in its world-class studios
for glass, sculpture, jewelry, metalsmithing,
painting, drawing and printmaking. Courses
and workshops are available for beginning as
well as advanced students. Open lab times are
available for independent artists during the
week and on many weekends. Please call for a
full schedule and a registration packet.

South Seattle Community College

6000 16th Avenue SW, Seattle 98106
(206)764-5352

South Seattle Community College remains
the best-kept secret in the greater Seattle area.
Craftspersons of every discipline are delighted
to discover that the finest educational welding
fabrication facility (possibly in the universe)
welcomes both vocational and recreational
students. We got the stuff! Calling ahead is
best, but you're OK to stop by anytime. Ses-
sions Mon-Fri, 7am-12pm, and Mon/Wed or
Tue/Thu evenings. Call John Todd, (206)764-
5352, (206)764-5359(w), or (206)283-5069(h).
E-mail to jtodd@sccd.ctc.edu

Opportunities

Art Studio for Rent

Small studio or darkroom available
mid-February, 2007 - \$250

1426 South Jackson St. Studios - 1 mile
east of Downtown Pioneer Square

8.5 x 11 s/f ground floor studio perfect for a
darkroom or other intimate work space. No
windows, but lots of walls; plumbing for 2 sinks
(1 darkroom sink currently installed); good
ventilation fan.

Prices include all utilities and NNN. First/
last/\$200 key deposit required with 1 year
lease. Both studios are located at 1426 S.
Jackson Street Studios, an active visual arts
building with 3 floors of studios containing
mostly painters. Visual artists only please. Work
only-not live-in spaces.

Visit our web site for more info about the
building: <http://1426studios.com>

Contact Jaq Chartier, 206/245-8598
or email 1426@jaqbox.com. Showing by
appointment only

Proposed Metals Guild Members Show/Sale Questionnaire

We are sending out this questionnaire to see if our members are interested in selling and promoting their work by this avenue. This is another way to get recognition from buyers and collectors, be seen, if you are new. Some of you have galleries that represent you, others do not, or wish to be independent, but still need to find markets for their work. So please give us some feed back.

1. At a date to be determined would you be interested in participating in a Metals Guild Members show and sale? We're thinking of offering tables in a covered area or booth spaces outside displaying and selling your own hand made items.

Yes No Preferred Location?

2. Do you think all participants should be required to volunteer on at least one committee for the planning, advertising, set-up and clean-up of the show?

Yes No Other Tasks?

3. What time of year and how many days should the show run?

Time of Year One day Two days Three days

4. Alternatives to covering the cost of the show might come from collecting booth fees, commissions, or both. Which do you prefer?

Booth fee Commissions Both

Alternatives?

5. Should the Seattle Metals Guild invite other guilds to participate with us in our show, like the Pottery Guild, Glass Guild, and Bead Guild?

Yes No Other Invitees?

Any Suggestions?

Please send your answers to the Seattle Metals Guild, 1425 Broadway #154, Seattle, WA 98122-3813

continued from page 4

Studying computer graphics at school proved only a distraction, and he found himself wandering down the hall to the fashion design program. There he learned how to construct make-ups and models, how to drape fabric and how to stay true to his own sense of design. It was during this time that he first started experimenting with metal as a wearable material. Out of laziness, he claims, it was one way to avoid the tedious task of draping and forming fabric. Upon graduation, he found himself creating commissioned fetish gear and costumes, a world for which he “makes the dice but doesn’t play the game.”

In a search for other craftsmen with similar aesthetics, Serrano started participating in reenacting medieval battles in Pennsylvania wearing homemade armor. It was there that he met Robert Macpherson, the man who introduced him to Hollywood and got him a job building armor for horses in “The Planet of the Apes.”

Ugo describes Hollywood as a playground for lots of big kids with lots of big money, all trying to make the coolest toys possible. That definitely leaves a niche for our man, as long as he keeps his patience, drive, and sense of humor.

His fashion background paid off, as Ugo uses duct tape and tin foil for draping, laying out the pattern before he works in the metal. When doing pieces for movies, he uses aluminum, a material that is malleable, fast-working, and in a quick shot of the camera still gives the heavy appearance of steel. If the soft

metal gets bent during a taping, great, it just adds to the desired affect of real battle. If a main character requires a piece, he will use 14-16 gauge mild steel and will take no short cuts that a close-up of the camera would notice. He starts with flat sheet and raises the basic shape a little bit further than he needs. He then backs it with pitch and chases out the desired forms from the front. While banging out the rough forms, Serrano can be found listening to industrial metal bands, like Ramstein, while doing the more delicate work of chasing will have him getting in touch with classical roots. These seemingly disparate tastes of music reflect the disparate sources of inspiration that he is working from. Although his work has an undeniable apocalyptic, sci-fi feel, classical roots are also present and historical references have been studied by Serrano and directly translated. He speaks excitedly about being allowed access to study the collections that are not displayed by the Metropolitan Museum in New York, but rather held in the basements. He is most moved by armor that bears human characteristics that looks back at you. This is most prolific in Rollings armor from Italy, he explains.

Ultimately, Serrano describes himself not as metallurgist or a purist. He calls himself an expressionist, who just likes making stuff. The Seattle Metals Guild was lucky to have him for our annual lecture series. It was an inspirational lecture by an artist who is generous with his knowledge, and in turn seeks more knowledge.

If you’re interested in knowing more about Ugo Serrano and his work, please visit his website at: www.ugoserrano.com

2006-2007 SMG Board of Directors

All addresses are suffixed with "@seattlemetalsguild.org"

President	Jennifer Howard-Kicinski	206-227-2207	president@
Vice President	John Caster		vicepresident@
Secretary	Jennifer Stenhouse		secretary@
Treasurer.....	Roland Crawford	206-652-0670	treasurer@
General Board	Aaron Barr		board2@
General Board	Dana Cassara		board3@
General Board	Jessie Wylie		board5@
General Board	Kiraya Kestin		board6@
General Board	Amy Hoins		board7@

SMG Services

Newsletter Editor	Jena Hounshell	newsletter@
Library	Jonathan Tindall	librarian@
Symposium Coordinator...	Roland Crawford	symposium@
Workshop Coordinator ...	John Heldridge	workshop@
Membership	Judy Kuskin	membership@



The Seattle Metals Guild is a non-profit organization made up of people with varying interests and involvement in traditional and contemporary jewelry and metal arts.

The Guild was founded in 1989 to provide for the exchange of ideas and information, as well as to offer affordable educational opportunities to its members and the public.

Our activities include: a web site, bimonthly newsletter, exhibitions and a series of aesthetic, technical and business workshops and lectures.

The skills, energy and enthusiasm of the Seattle Metals Guild members promote and sustain its successful programs.

We welcome new members and encourage participation by everyone.

The Seattle Metals Guild Newsletter is published bimonthly. Comments, announcements and ads are welcome from all SMG members.

Please contribute to your Newsletter

We encourage participation and welcome information about upcoming shows and events, articles about safety and bench tips you would like to share. If you have comments or something to contribute, please submit your information, generated in a word processing program, via e-mail.

Include photos or logo artwork in JPEG format, if available. Remember to provide who, what, when, where, why and how.

Jena Hounshell: newsletter@seattlemetalsguild.org

Deadline for the May/June issue is April 10. Articles received after that date may be published in the following newsletter.

www.seattlemetalsguild.org

Printing provided by Jon Tindall,
of Jewelry Resource and Supply.

March/April 2007

1425 Broadway #154
Seattle, WA 98122-3813

